



web. [www.easygates.co.uk](http://www.easygates.co.uk)  
tel. 0845 054 5070  
fax. 0121 561 3395  
email. [info@easygates.co.uk](mailto:info@easygates.co.uk)

unit 4 broadcott trading  
estate  
station road  
cradley heath  
west midlands  
b64 6nt

# **EasyGates**

## access control.

[www.easygates.co.uk](http://www.easygates.co.uk)

0845 054 5070

# Keypads.

## Blue Illuminated Digital Keypad

REF: EASYBKA

Illuminated Keypad  
12-24 VAC/DC  
500 x 4-Digit Codes  
IP65  
2 Relays  
Integrated Keypad Heater

### Best Seller



## Digital Proxi-Keypad

REF: EASYBKDP

Illuminated Keypad with built-in Proxi  
12-24 VAC/DC  
500 Users  
IP65  
2 Relays  
Integrated Keypad Heater



## Blue Illuminated Digital Keypad

REF: GALEO

Illuminated Keypad  
12-48 or 12-24 VAC/DC  
100 x 4-Digit Codes  
IP67  
1,2 or 3 Relays

## Backlit Digital Keypad

REF: EASYPL

12-24 VAC/DC  
500 x 4-Digit Codes  
2 Relay Outputs 5A  
2 Two-Colour Warning LED  
+ Buzzer  
Optical tamper  
ABS box and 1m cable



## Miniaturised Proximity Reader with Built-in Relay.

REF: EASYMINI

Any enrolled tag or badge presented to the reader will activate a relay (solid state)

The output relay of the reader can be either impulsive or bistable

The device's IP67 reader (with resin-encased electronics) can be used externally and accommodates up to 50 different cards or tags.

Miniaturised  
50 users  
Range 3-6 cm  
1 relay output 2 A  
Two-colour warning light + buzzer  
Magnetic tamper  
ABS box IP67 and 1 m cable 1,2 or 3 Relays



We also stock many other keypads, proxi-readers and magnetic readers.

# NEW for 2008

Copies

# 433 Mhz Remotes



## cloning remote Control!

Stylish chrome and black remote control with sliding button protector.

This remote is simple to clone from other FIXED code remotes on a frequency of 433.92MHz. It's 1st class design is highly desirable and aesthetically pleasing to almost any customer with a taste for style

# Intercoms.

## Colour/Mono Video Intercom System

Ref: CV1A, EXKBW2

Mono and Colour Intercom Systems. On the handset there are 3 buttons available:

- Lock Release • View Camera • Intercom Call

The Lock Release button operates a volt free switch in the monitor which can be used to operate a lock release. The View Camera button self lights the monitor.

Connection of up to 3 monitors.

- Surface mounted
- 4 wires from panel to monitor (+ 2 wires for lock)
- Call up to 3 monitors simultaneously.
- 15V, 500mA supply to monitor



Also Available  
with s/s Keypad

## M-inox Audio Intercom System

Bitron Video present M-inox, the compact, tough doorphone panel capable of solving all installation problems in 'difficult' locations. Specifically suitable for gate posts, this panel is ideal for all systems prone to acts of vandalism, such as public garage doors or gates, particularly those exposed to weather elements. M-inox is made of tough stainless steel for enduring in time. Tougher and yet smaller.

bitronvideo



The wide range of models make M-inox the most versatile solution for all systems. What is more, it is wall-mounted without needing to be embedded and protrudes by only 23 millimeters.

M-inox can be developed either horizontally by fitting up to three rows of buttons, or vertically using an additional seven-button module, again in this case with a width of barely 56 millimeters.



## Comelit Audio Intercom System

REF: Powercode

Surface mounted audio door entry kit for traditional cabling, available from 1 to 8 users. The kit includes an attractive Powercom entrance panel complete with the Powercode module, the electronic key allowing opening of the entrance by entering an 8-digit secret code which can be programmed by the resident.

The kit has a unique design: exclusive night lighting with blue LEDs makes it magical and unmistakable. Thanks to its clean-cut lines and pleasing appearance, the OKAY type telephone fits in perfectly with any type of residence.



Comelit



Tel: 0845 054 50 70

**Call for  
great  
prices**  
or visit our website...



**Commax Colour Video Intercom System**  
**REF: CDV50P/DRC-40CK**

Supplied in a boxed kit form, the CDV50P/40CK includes a stylish 5" LCD TFT colour monitor and a robust door station. The system requires just 4 wires to connect the door station to the monitor handset, and with the lock release function being supplied from the door station, the installation is simple and fast.

Options include a flush or surface mounted, stainless steel housing kit with the additional option of integrating a keypad or proximity reader. A second door station can be connected, along with a second monitor handset and/or an audio extension phone.



Available with s/s Callpoint  
with Keypad  
**Flush or Surface**

**Wireless Audio Intercoms**



Because it uses radio technology, the Daitem doorphone system is wire-free and totally mobile. As there is no wiring from the handset to the outdoor caller unit, the Daitem doorphone system opens up a whole array of possibilities: multiple handsets, total mobility, no damage to interior design, and so on. The Daitem radio doorphone controls access in many different applications: residential, apartment buildings, renovated buildings, surgeries, and various small business premises, etc.



**Available for up to 52 users**

[www.easygates.co.uk](http://www.easygates.co.uk)

# Accessories.

## Induction Loop Detectors

Single Channel/Dual Channel ULD466923F / ULD466913F

Wide self-tuning range  
Strong loop field  
Quality interference immunity  
Selectable output config.  
Permanent presense feature  
High level circuit protection  
Sensitivity levels optimised for parking/vehicle access applications  
12/24V AC/DC.



## Cables

Wire1/Wire2

Wire1- 6m loop for inductive detectors  
Wire2- 10m loop for inductive detectors



### Best Price on the Market!

## 24Hr 7Day Timer

Common with N/O & N/C contacts  
Up to 8 ON/OFF switches a day  
Battery backup  
TH827 - 12 (12V AC/DC)  
TH827 - 24 (24V AC/DC)



## 12v Handy Little Relay

2 Relays with C, N/O and N/C contacts



## 230v Mains Rotary Isolator

RS 254 (25A 4 P)  
RS 324 (32A 4 P)



## Electric Strike

REF: GAER

12VAC Electric door strike for Yale type doors  
Fail secure lock  
Includes bracket for various doors



## Power Supplies

We stock a large amount of power supply units both for internal and external use.



## Door Release Buttons

Large selection of buttons and keyswitches in stock



# safety contact edges



## Made to Measure

Safety contact edges are employed to guard closing edges at possible crushing or shearing points. They are used in gates, machines and handling facilities to protect people and equipment. We can supply safety edge made to measure and have it delivered to you the day after purchase!

In a matter of minutes the safety edge can be attached to your system. Making it less time consuming than other products.

Advantage is that you would have a guaranteed quality made safety edge to the exact size you need. What sense does it make to have a 2 meter safety edge on a 2.12 meter gate? - "It is not only senseless it is also illegal!"

## Tested to EN 1760-2

ASO's wide range of safety edges are certified by a notified body in combination with the relays for doors and shutters and the inductive transmitting system (ISK) for sliding gates. This means that they fulfil the new norms and standards.

# Receivers.

## Single Channel Indoor Rolling Code Receiver

REF: MR1E

Receiver for up to 200 standard Prastel or EASYROLL transmitters.  
12-24Vac/dc  
Operating frequency 433,92MHz  
Monostable or bistable relays



## 2 Channel EASYROLL Transmitter

REF: MPSTP2EXP

E.R.P.A. is the third evolution of PRASTEL's Rolling code technology, allowing the insertion and simultaneous cancellation of a lost transmitter.  
2-channels  
Operating frequency 433,92MHz  
Distance 100m



## External 2-channel Receiver with Antenna

REF: MRA2E

Receiver for up to 200 EASYROLL or standard Prastel transmitters.  
12-24Vac/dc  
Operating frequency 433,92MHz  
Monostable or bistable relays



## EASYROLL Transmitter

REF: BFOR

Same characteristics as MPSTP2EXP.  
2-4 channels (with 3 buttons)



For more  
fantastic  
deals  
visit  
[www.easygates.co.uk](http://www.easygates.co.uk)

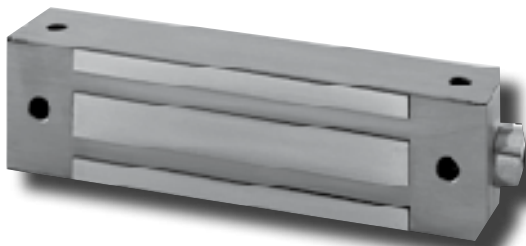
## Universal Receiver with Antenna

REF: STAR250

User-friendly programming technology makes it easy to add, block and delete up to 250 transmitters individually.  
12-24 VAC or DC  
433.92 MHz



# Magnetic Locks



## External Magnetic Locks

REF: ES500, ES400, ES180

Magnetic locks can be used in many door and gate applications. We also stock many other mag-locks including internal.

Specifications	ES500	ES400	ES180
Finish:	Stainless Steel	Stainless Steel	Stainless Steel
Voltage:	12/24V dc	12/24V dc	12/24V dc
Current:	630mA @ 12vdc, 315mA @ 24vdc	630mA @ 12vdc, 315mA @ 24vdc	630mA @ 12vdc, 315mA @ 24vdc
Dimensions:	230 x 61 x 40mm	230 x 43 x 30mm	168 x 33 x 24mm
Environmental:	IP67	IP67	IP67
Holding Force	500KG	400KG	180KG

# Photocells.

## Relay Photocells

REF: 100263

Nominal Range 30m  
AUTOTEST Function  
Shielded Receiver Amplifier  
Power Supply 12/24 VAC/DC  
Alignment Test Point  
NO, NC and COM contacts



## Flush Fitting Photocells

REF: FOTO35SDE

Nominal Range 35m  
AUTOTEST Function  
Shielded Receiver Amplifier  
Power Supply 12/24 VAC/DC  
Alignment Test Point  
NO, NC and COM contacts



## Battery Powered Photocells

REF: FT25B

Battery or Line Power Supply  
Power Supply 12/24 VAC/DC  
Contact Input for Safety Edge  
Nominal Range 25 m  
Transmission Duty-Cycle: 0.2 %  
NO, NC and COM contacts

Battery Life 2 Years



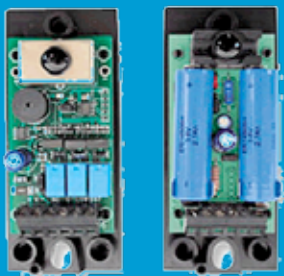
## Battery Powered Photocell

### Adjustable

REF: FT25B2

Beam Adjustment 0° - 90° -180°  
Battery or Line Power Supply  
Power Supply 12/24 VAC/DC  
Contact Input for Safety Edge  
Nominal Range 25 m  
Transmission Duty-Cycle: 0.2 %  
NO, NC and COM contacts

Battery Life 2 Years



# best seller

## S/S Vandal-Proof Photocells

REF: FSTYLE25A

3 Fixing Angles (0° - 90° - 180°).  
Protection Rating - IP 65  
Nominal Range 25 m  
Power Supply 12/24 VAC/DC  
AUTOTEST function  
NO, NC and COM contacts



for more information  
call **0845 054 5070**  
or visit our website.



**Photocell posts also available**

[www.easygates.co.uk](http://www.easygates.co.uk)